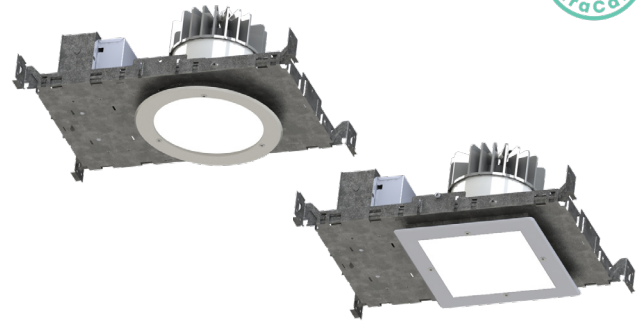


PROJECT: _____
 TYPE: _____
 PRODUCT: _____
 APPROVED BY: _____



DCDL SERIES

PRODUCT FEATURES

- Ligature-resistant features to support Behavioral Health applications
- 4" and 6" sealed recessed downlight, round or square aperture options
- Suitable for non-IC and wet location installations, IK10 listed per IEC60068-2-75: 2014, and IP65 rated per IEC60598
- Variety of wattages and lumen packages, up to 3750lm at 43W (6")
- This product is Made in America and complies with Buy American Act (BAA)

ORDERING INFORMATION

Example: DCDL4R-LW50-F-A-1-90C-UN-DM1



DCDL				F			
Series	Aperture 4 = 4 inch 6 = 6 inch	Shape R = Round S = Square	Lumen Output* LW = Low SD = Standard MD = Medium HG = High *Specify desired lumens. Subject to change. **Higher lumen packages for 6" only. Subject to change. Performance data on page 3.	Color Temp. 30 = 3000K 35 = 3500K 40 = 4000K 50 = 5000K RGBW = RGB + 4000K AMB = Amber (585-595nm) BLU = Blue (470nm) RGBW/30 = RGB + 3000K* RGBW/40 = RGB + 4000K* * Must use with DMX Driver	BIOS BIOS Color Temp. B35 = 3500K B40 = 4000K B50 = 5000K BIOS Tunable CCT BTW1 = 3500K-2700K BTW2 = 4000K-2700K Tunable White TW1 = 2700K to 5000K TW2 = 2700K to 6500K	Trim F = Flange	Trim Finish A = .080 Alum. Painted B = 18Ga. CRS Painted C = 18Ga. 304 Brushed* D = 18 Ga. SS Painted* *Additional fees may apply. Consult factory for details.

Flush Lens (Tamper Resistant lens) 1 = .125 Clear Polycarbonate 2 = .250" Clear Polycarbonate	CRI 80C = 80 CRI 90C = 90 CRI	Voltage 12 = 120V 27 = 277V 34 = 347V UN = Universal (120-277V)	Driver Type DM1 = 0-10V Dimming with 1-100% range DMT = 0-10V & TRIAC/ELV RGBW Driver* DMX = DMX Driver *The DMX driver is compatible for RGBW options BIOS Driver** STC = Static BIOS*** DMB = Dynamic BIOS Dimming**** **BIOS driver requires choice of either static or tunable BIOS options in Color Temp section ***0-10V with Dimming from 1%-100% ****0-10V Intensity Dimming to 1% and Dim-to-Dark capabilities Tunable White Driver+ TWD = 2-Channel 0-10V DALI8 DALI8 = 1-Channel DALI8 +Tunable White Driver requires choice of TW1 or TW2 in Color Temp column. Does Not apply to BIOS	Options FZ1 = Fuse (120V) FZ2 = Fuse (277V) EM = Emerg. Battery (Remote)* W = Wing Bracket *If stored, batteries should be fully recharged every six months and kept between 0°C-25°C to maintain optimal battery capacity.
--	-------------------------------------	---	---	--



New Star Lighting

2225 W Pershing Rd, Chicago, IL 60609
 (773) 847-1400
www.newstarlighting.com

Specifications and dimensions are subject to change without notice. For additional options and dimensional details, please consult your New Star Lighting representative.

SPECIFICATIONS

HEAT SINK: Custom diecast aluminum heat sink design for maximum thermal dissipation.

FRAME-IN KIT: 20-gauge die-formed, galvanized steel. Vertically adjustable collar accommodates ceiling thicknesses up to 1.25", adjustable post-installation. telescopic hanger bars come as standard. can be installed in either direction (wing bracket can be ordered as option) for installation with wood and steel frame joists and T-grid ceiling systems spaced up to 24" on center. Quick-access junction box accessible post-installation from above and below ceiling. Includes (7) 1/2" knock-outs to allow straight conduit runs.

TRIM: IP-rated trim/Light engine incorporates the heat sink, LED module, optics and lower trim. Configurable with an IP64-rated Flush lens trim that is secured to the Frame-In kit with hidden torsion springs or an IP65 Flush lens trim secured with three (Round) or four (Square) tamper resistant (Torx®) captive fasteners. Closed-cell gasketing at ceiling flange. See Trim Ordering Information for available options.

OPTICAL: Round or Square aperture. Diffuse Acrylic upper lens. 1/8" clear impact-resistant acrylic or polycarbonate flush lens at ceiling trim. Continuous seal between lens and trim ring. Available with various reflector finishes. See Ordering Information for available options.

ELECTRICAL: LED source available in multiple CCT and CRI combinations with a maximum 3-step MacAdam variation allowance. See Trim Ordering Information for available options. 120-277VAC or 347VAC, 50/60Hz electrical input with serviceable constant current driver (<20% THD, >0.90 PF). Minimum 85% driver efficiency. Standard 0-10V dimming with 1-100% range and dim-to-dark capabilities; 0.2mA maximum source current. Optional eldoLED ECOdrive DALI-2/LEDcode2 driver with 1-100% range.

Optional BIOS® SkyBlue® circadian solutions to produce the healthy "blue sky" light signal with blue spectrum peak at 490nm + for circadian entrainment. Bio-Dimming™ reduces CCT by 2700K.

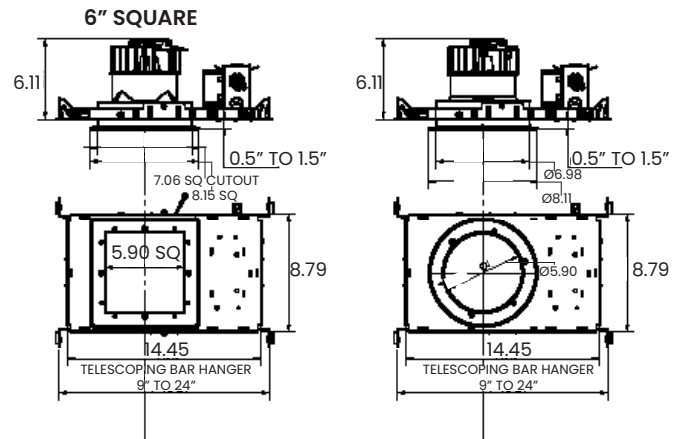
INSTALLATION: Recessed drywall and grid installation. Frame adjustable to ceiling thickness 0.5" to 1.25".

WARRANTY: New Star Promise.

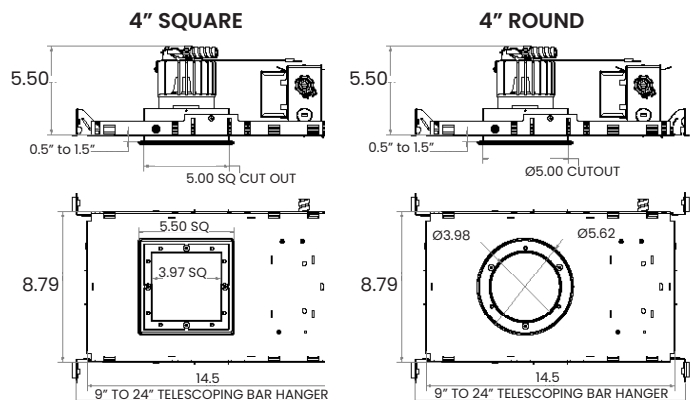
LABEL: Fixture is certified to UL standards by Intertek Testing Laboratory for non-IC and wet location installations. IP65 Rating per IEC60598. Certified for NSF2 Splash Zone/ Non-Food Zones. This product is Made in America and complies with Buy American Act (BAA).

DIMENSIONAL DATA

6" DOWNLIGHT



4" DOWNLIGHT



The DuraCare™ Behavioral Health Downlight Series is covered by our New Star Promise.

Our promise means we will repair or replace any of our High Abuse or Vandal-Resistant architectural luminaires when installed according to our instructions for the life of the original installation if the fixture should fail due to physical abuse*.

*Damage caused by gunfire and chemical reactions is not covered by the New Star Promise.



New Star Lighting

2225 W Pershing Rd, Chicago, IL 60609
(773) 847-1400
www.newstarlighting.com

Specifications and dimensions are subject to change without notice. For additional options and dimensional details, please consult your New Star Lighting representative.

© 2025 New Star Lighting. All rights reserved. Unauthorized duplication or distribution is prohibited.

PERFORMANCE DATA

6IN Downlight Wide beam, 1500lm Engine, 115lm/W at 18.75W

SERIES	SHAPE	LUMENS OUTPUT	CCT	DELIVERED LUMENS	EFFICACY	SYSTEM WATTS
DCDL6	S	LW= LOW	40K	1178	85.4	13.7
		STD= STANDARD	40K	1748	86.1	20.2
		MD= MEDIUM	40K	2296	84.7	27.1
		HG= HIGH	40K	3506	80.2	43.3

SERIES	SHAPE	LUMENS OUTPUT	CCT	DELIVERED LUMENS	EFFICACY	SYSTEM WATTS
DCDL6	R	LW= LOW	40K	1270.8	92.1	13.8
		STD= STANDARD	40K	1886	92.9	20.3
		MD= MEDIUM	40K	2479	91.5	27.1
		HG= HIGH	40K	3750	85.8	43.7

SERIES	SHAPE	LUMENS OUTPUT	CCT	DELIVERED LUMENS	EFFICACY	SYSTEM WATTS
DCDL4	S	LW= LOW	40K	1128	75	14
		STD= STANDARD	40K	1346	76	18
		MD= MEDIUM	40K	1515	76	21
		HG= HIGH	40K	1907	76	28

SERIES	SHAPE	LUMENS OUTPUT	CCT	DELIVERED LUMENS	EFFICACY	SYSTEM WATTS
DCDL4	R	LW= LOW	40K	1087	73	14
		STD= STANDARD	40K	1375	74	18
		MD= MEDIUM	40K	1580	74	21
		HG= HIGH	40K	1935	69	28